

## Standard Preparation 1600 mm Vegetables Processing/ Washing Table with Upstand

ITEM # \_\_\_\_\_

MODEL # \_\_\_\_\_

NAME # \_\_\_\_\_

SIS # \_\_\_\_\_

AIA # \_\_\_\_\_



132766 (TLV1600PN)

Vegetables Processing Table with 2 polythene cutting boards, knife holder, 2 perforated Top covers and upstand, 1600mm

### Short Form Specification

Item No. \_\_\_\_\_

50mm high worktop in 304 AISI stainless steel, 2 bowls (684x303x180h mm). Integral radiused rear upstand, h=100mm. Square section legs 40x40mm on 1" height-adjustable feet in 304 AISI stainless steel.

N.I polythene cutting board and scraping hole on front.

### Main Features

- Sturdiness, stability and reliability of table accurately tested.

### Construction

- Table can be equipped with a mobile bin with lid for waste disposal (optional accessory).
- 50 mm worktop in 304 AISI stainless steel, 10/10 in thickness with upturned edges and reinforced waterproof underpanel, incorporates a layer of sound deadening materials.
- Square section legs and 40 mm height-adjustable feet in 304 AISI stainless steel.
- Table can be equipped with a set of castors as an alternative to the feet.
- 100 mm upstand with 10 mm radiused corner and 13 mm deep, designed to be used against a wall.
- Upstand back completely covered with Stainless Steel welded profile.

### Optional Accessories

- Lower shelf for 1600mm tables PNC 855147 ☐ and sinks
- Set of 4 wheels (2 with brake) PNC 855150 ☐ d. 100mm for tables and sinks (total height on wheels= 993 mm)
- 3-sided underframe for PNC 855154 ☐ 1600mm tables
- Single plastic drain syphon 1,5 PNC 855306 ☐ " for work tables with bowl
- Elbow operated mixer tap with PNC 855322 ☐ spout 3/4", single hole
- Elbow operated mixer tap with PNC 855323 ☐ short spout 3/4", single hole
- Foot operated mixer tap (hot PNC 855328 ☐ and cold) with spout 3/4"

APPROVAL: \_\_\_\_\_

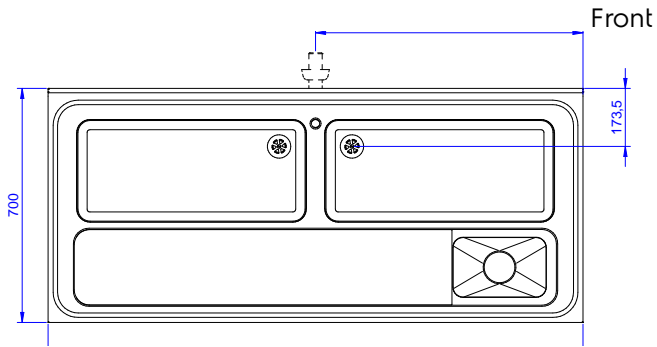


**Electrolux**  
PROFESSIONAL

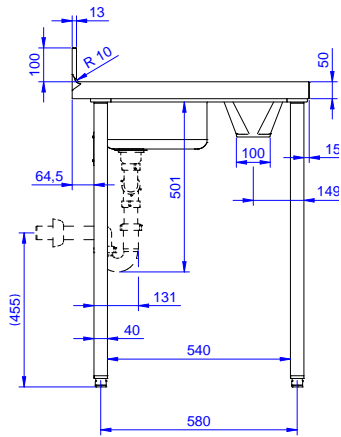
## Standard Preparation 1600 mm Vegetables Processing/ Washing Table with Upstand

### Key Information:

|                                   |         |
|-----------------------------------|---------|
| Number of cutting boards          | 2       |
| 132766 (TLV1600PN)                |         |
| Cutting board dimensions - width  | 430 mm  |
| Cutting board dimensions - depth  | 640 mm  |
| Cutting board dimensions - height | 25 mm   |
| External dimensions, Width:       | 1600 mm |
| External dimensions, Depth:       | 700 mm  |
| External dimensions, Height:      | 1000 mm |
| Upstand Dimensions, Height:       | 100 mm  |
| Upstand Dimensions, Depth:        | 13 mm   |
| Upstand Dimensions, Radius:       | R=10    |
| Worktop thickness:                | 50 mm   |
| Net weight:                       | 60 kg   |

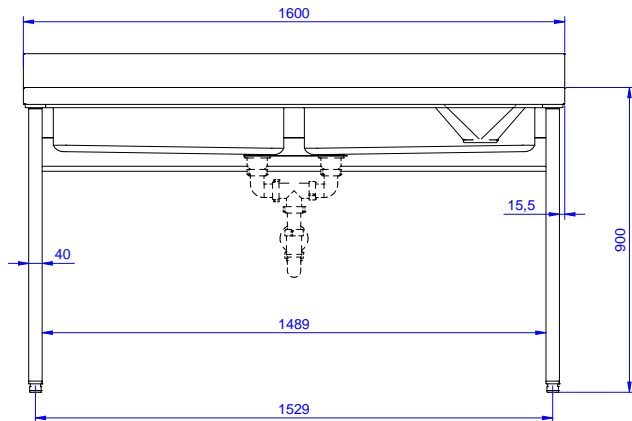


Side



D = Drain

Top



Standard Preparation  
1600 mm Vegetables Processing/Washing Table with Upstand

The company reserves the right to make modifications to the products without prior notice. All information correct at time of printing.

2026.01.15